

The friendly & helpful estate agents.

ashleigh
stone



Woodfield Park Drive, SS9 1LN
2 Bedrooms
Detached House
Offers Over £375,000

To arrange a viewing
call 01702 480 666

ashleighstone.co.uk

FOR SALE

Woodfield Park Drive, SS9 1LN

Offers Over £375,000

A contemporary coastal gem, two bedroom detached home in Leigh on Sea.

Perfectly tailored for young professionals seeking style, convenience and a seaside lifestyle, this beautifully presented two bedroom detached home combines modern comfort with unbeatable location. Positioned just moments from the vibrant heart of Leigh on Sea, it offers the ideal balance of social buzz and serene coastal living, all within easy walking distance of Leigh Broadway, Chalkwell Beach and excellent transport links.

Modern living meets easy entertaining. Step inside to discover a bright and welcoming open plan lounge and kitchen designed to suit modern life. Whether you're relaxing after work, catching up with friends, or hosting a dinner party, this space flows effortlessly, light, filled, contemporary and crafted for everyday ease.

The fully integrated kitchen features sleek cabinetry, ample storage and top quality appliances, making home cooking as enjoyable as a night out. A convenient downstairs WC completes the ground floor, adding an extra touch of practicality for day to day living.

Restful bedrooms and stylish bathroom upstairs, you'll find two generous double bedrooms, each offering a calm retreat at the end of a busy day. The east facing room greets the morning sun, perfect for early risers, while the west facing bedroom catches the golden evening light, ideal for relaxed weekends.

A contemporary three piece bathroom suite features a full sized bath with shower, modern fixtures and a heated towel rail for that touch of hotel style comfort.

Low maintenance outdoor living to the side, this home provides valuable off street parking, a rare find so close to the Broadway. A private side gate leads to a south facing, paved courtyard garden: low maintenance and perfect for summer barbecues, drinks with friends, or quiet afternoons enjoying the fresh coastal air.

Location, lifestyle and connectivity, this home's location truly sets it apart. Just a stroll takes you to the independent boutiques, artisan cafes and lively bars along Leigh Broadway and Leigh Road, the beating heart of the area's social scene. Enjoy morning coffee runs, Sunday brunches, or after work cocktails, all within easy reach of your front door.

Outdoor enthusiasts will love being only 10 minutes from Chalkwell Park, ideal for a jog, a picnic, or a walk among the green spaces. For commuters, Chalkwell Station is just a 12 minute walk away, offering direct C2C services into London Fenchurch Street. Spend your weekends at Chalkwell Beach, also a short stroll away, where you can unwind by the sea or take in stunning Estuary views. Regular bus routes ensure effortless access to nearby areas, giving you freedom to explore without the need for constant driving. This property blends coastal charm, urban convenience and a contemporary layout, perfectly suited to first time buyers who want to make the most of Leigh on Sea's dynamic lifestyle.

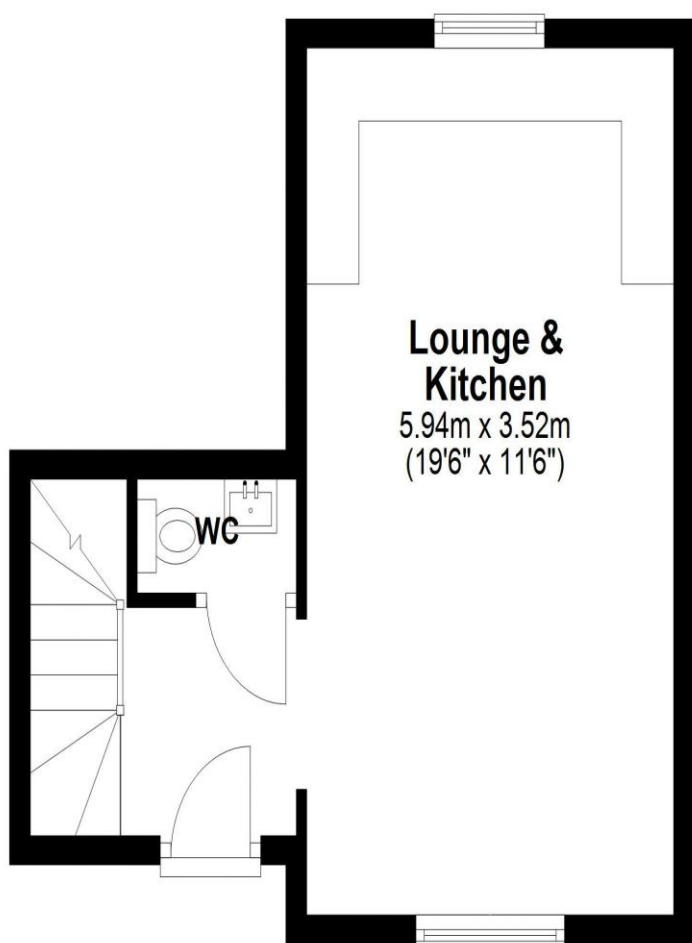
To arrange a viewing of this super property call 01702 480 666
or send us an email to property@ashleighstone.co.uk



2 BEDROOMS / DETACHED HOUSE / OFF STREET PARKING / GREAT LOCATION

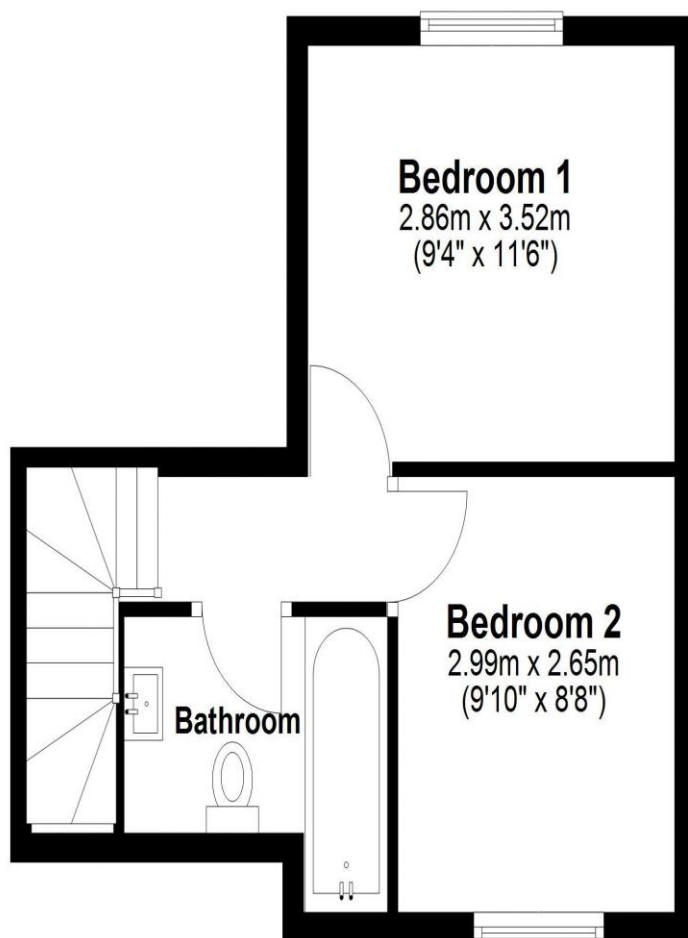
Ground Floor

Approx. 27.4 sq. metres (294.6 sq. feet)



First Floor

Approx. 27.4 sq. metres (294.9 sq. feet)



Total area: approx. 54.8 sq. metres (589.5 sq. feet)

ashleigh stone

107 Broadway, Leigh-on-Sea, Essex SS9 1PG
01702 480 666 / property@ashleighstone.co.uk